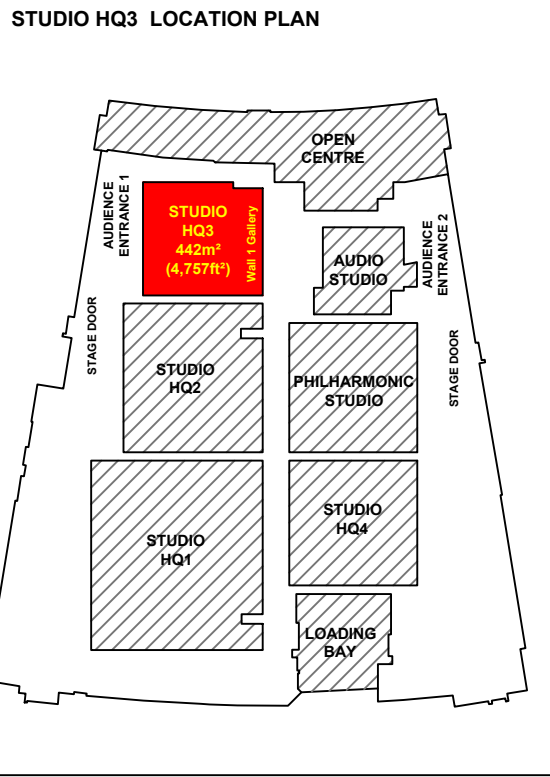


MEDIA CITY

HQ3 Studio Plan

Setting Layout



- Measurements**
- STUDIO FLOOR GRID MADE UP OF 600mm SQUARES
 - STUDIO WALL 2 TO WALL 4: 23.072m (75.7ft)
 - STUDIO WALL 2 TO WALL 4 WITHOUT FIRELANE: 21.01m (68.93ft)
 - STUDIO WALL 1 TO WALL 3: 18.298m (60ft)
 - STUDIO WALL 1 TO WALL 3 WITHOUT FIRELANE: 16.22m (53.21ft)
 - STUDIO SPACE: 422.17sq m (4,757 sq ft)
 - STUDIO SPACE WITHOUT FIRELANE: 340.78m (3667.76ft)
 - IMPOSED LOAD 12kN per sq m
 - HEIGHT TO UNDERSIDE OF GANTRY IS: 7.36m
 - HEIGHT TO GANTRY UPPER HANDRAIL IS: 8.44m
 - HEIGHT TO UNDERSIDE OF GRID IS: 11.5m
 - HEIGHT TO OUTER CYC TRACK IS: 6m
 - HEIGHT TO MIDDLE CYC TRACK IS: 6m
 - HEIGHT TO INNER CYC TRACK IS: 9m
 - MAXIMUM HEIGHT OF SCENERY HOOKS IS: approx 10m
 - MAXIMUM HEIGHT OF LIGHTING BARS IS: 10m
 - SIZE OF LOAD IN DOOR: 3m Wide , 5.2m High

- Hoists**
- NUMBER OF LIGHTING HOISTS:
57 AT 2.4m, 4 AT 2m, 4 AT 0.48m
 - 12 SCENERY TRACKS WITH 3 HOISTS IN EACH TRACK
 - NUMBER OF SCENIC HOISTS WITH SWL 180KG: 36

- Mains**
- GROUND LEVEL MAINS:
2x 125A 3φ
12x 32A 1φ (FUSED AT 25A)
24x 16A 1φ
48x 3Kw SINEWAVE DIMMERS
 - GANTRY LEVEL MAINS:
2x 63A 3φ
8x 32A 1φ (FUSED AT 25A)
16x 3Kw SINEWAVE DIMMERS
 - LIGHTING HOIST MAINS:
65x 32A 1φ (FUSED AT 25A) WITH A 16A 1φ PIGGY BACKED
296x 3Kw SINEWAVE DIMMERS
 - GRID MAINS:
2x 32A 3φ (FUSED AT 25A)
4x 3Kw SINEWAVE DIMMERS

- SWL**
- STUDIO FLOOR 12kN/m²
 - GANTRY FLOOR 500kg/m²
 - GANTRY HANDRAIL CENTRE POINT 100kg, THIRD POINTS 120kg
 - GRID 150kg/m²

- KEY:**
- Fire Lane**
 - Water Tap**
 - Fire Alarm Beacon**
 - Fire Alarm Sounder**
 - Facility Panel**

- 3 Phase Mains Outlets**

PRODUCTION:

DIRECTOR:

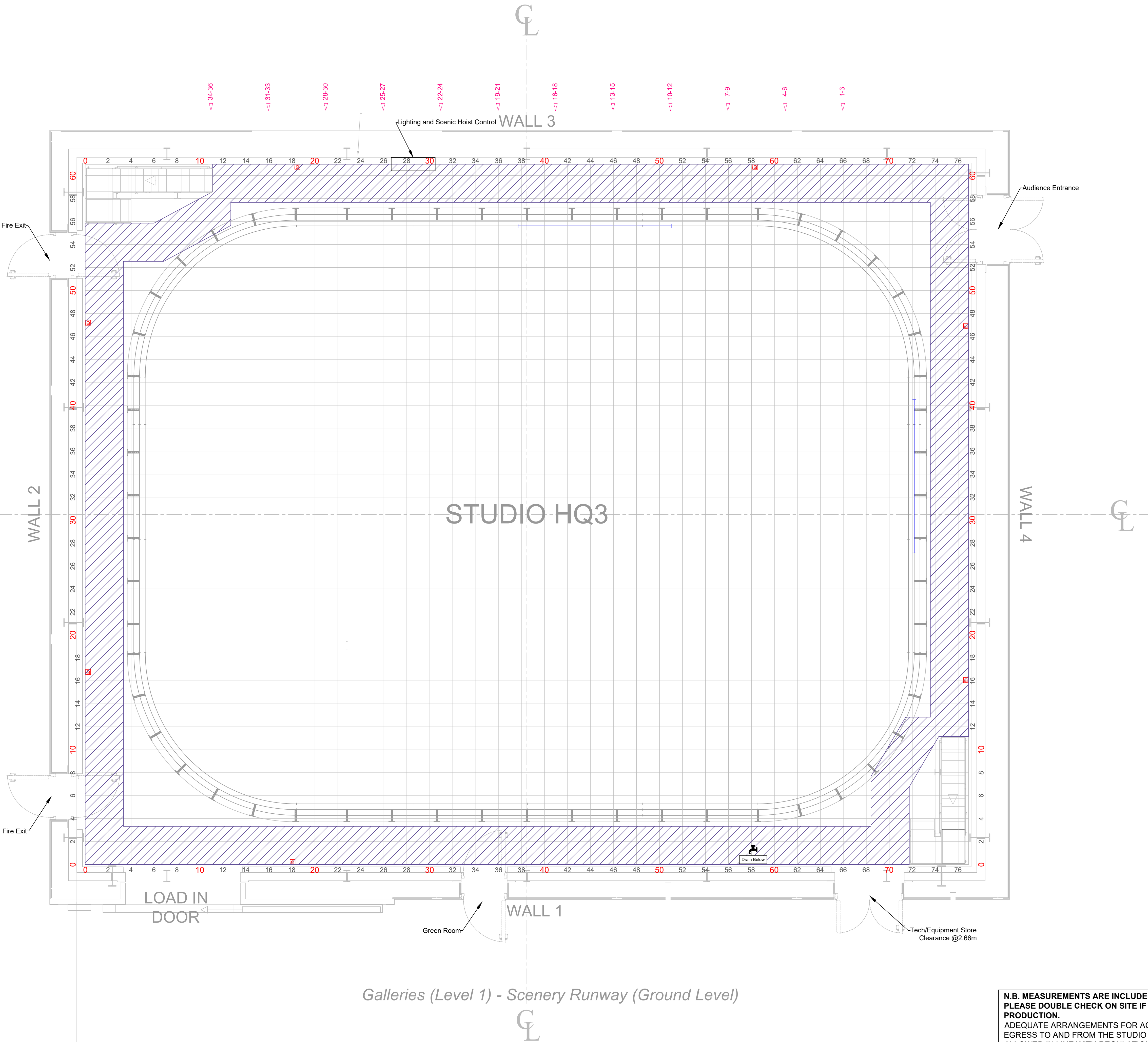
DESIGNER:

DRAWN BY:

PRODUCTION DATE:

Useful Telephone Numbers
24hr Control Room 0161 855 6400
dock10 office 0161 886 5111
MCR 0161 886 5151
A1 @
ISO_A1_(841.00_X_594.00_MM)
Version: 2
Drafted 10/06/2026,

N.B. MEASUREMENTS ARE INCLUDED AS A GUIDE. PLEASE DOUBLE CHECK ON SITE IF CRITICAL TO PRODUCTION.
ADEQUATE ARRANGEMENTS FOR ACCESS AND EGRESS TO AND FROM THE STUDIO SHOULD BE ALLOWED IN LINE WITH REGULATIONS



Galleries (Level 1) - Scenery Runway (Ground Level)